



PRINCE SHRI VENKATESWARA ARTS AND SCIENCE COLLEGE

Gowrivakkam, Chennai-600073.

Affiliated to University of Madras, ISO 9001:2015 Certified Institution

EMPLOYER FEEDBACK ON CURRICULUM, INFRASTRUCTURE FACILITIES & AMBIENCE OF THE INSTITUTION – ANALYSIS REPORT

Academic Year

2020-21

Department

B.Sc. Biochemistry

Number of Respondents

7

Feedback Rate: Strongly Agree (5), Agree (4), Neutral (3), Disagree (2), Strongly Disagree (1)

S. No	Feedback on Curriculum, infrastructure facilities & ambience of the institution	5	4	3	2	1
1	Rate the students of PSVASC on general communication skills. (Related to Academic process and performance of students)	6	1	0	0	0
2	Rate the students of PSVASC on developing practical solutions to work place problems (Related to Academic process and performance of students)	4	1	1	0	1
3	Rate the students of PSVASC on working as a team (Related to Academic process and performance of students)	5	1	0	1	0
4	Rate the students of PSVASC on taking appropriate level of responsibility (Related to Academic process and performance of students)	7	0	0	0	0
5	Rate the students of PSVASC on Time Management (Related to Academic process and performance of students)	5	2	0	0	0
6	Rate the students of PSVASC on Decision Making (Related to Academic process and performance of students)	4	3	0	0	0
7	Rate the students of PSVASC on response to workplace challenges (Related to Academic process and performance of students)	6	1	0	0	0



PRINCE SHRI VENKATESWARA ARTS AND SCIENCE COLLEGE

Gowrivakkam, Chennai-600073.

Affiliated to University of Madras, ISO 9001:2015 Certified Institution

8	Rate the student's ability to contribute for reaching the goal of organization (Related to Academic process and performance of students)	4	1	1	1	0
9	Rate the students of PSVASC on technical knowledge and skills (Related to Academic process and performance of students)	5	2	0	0	0
10	Rate the students of PSVASC on leadership quality and taking up responsibilities (Related to Academic process and performance of students)	5	1	1	0	0
11	Rate the students of PSVASC on relationship with seniors / peers / subordinates and work ethics (Related to Academic process and performance of students)	4	3	0	0	0
12	Rate students of PSVASC on Creativity and Innovations. (Related to Academic process and performance of students)	5	2	0	0	0
13	Rate the students of PSVASC on lifelong learning and technology adaptability (Related to Academic process and performance of students)	7	0	0	0	0
14	Rate students of PSVASC on sustainability, environment awareness and social activities (Related to Academic process and performance of students)	5	1	1	0	0
15	Rate the learning ambience of the institution (Related to ambience of the institution)	4	3	0	0	0
16	Rate the functioning of Placement Cell (Related to ambience of the institution)	5	1	1	0	0
17	Rate the laboratory and research facilities of the institution (Related to infrastructure facility of the institution)	4	3	0	0	0
18	Rate the infrastructure facility of the institution to organize Pool Campus (Related to infrastructure facility of the institution)	4	3	0	0	0
19	Rate the WIFI facility with adequate bandwidth provided by the institution (Related to infrastructure facility of the institution)	5	2	0	0	0
20	Rate the overall impression of the institution (Related to infrastructure facility of the institution)	4	2	0	1	0



B. Kalpana
PRINCIPAL
PRINCE SHRI VENKATESHWARA
ARTS AND SCIENCE COLLEGE
GOWRIVAKKAM, CHENNAI-600 0



PRINCE SHRI VENKATESWARA ARTS AND SCIENCE COLLEGE

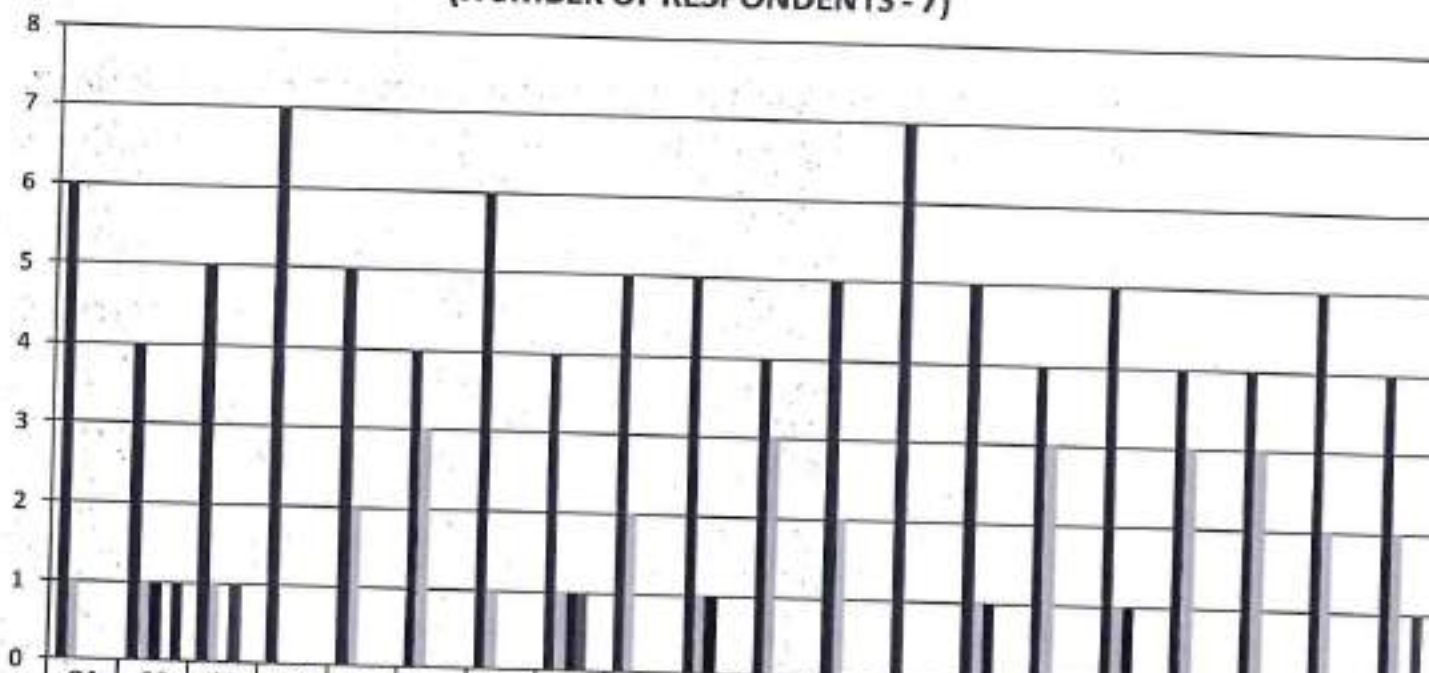
Gowrivakkam, Chennai-600073.

Affiliated to University of Madras, ISO 9001:2015 Certified Institution

EMPLOYER FEEDBACK ON CURRICULUM, INFRASTRUCTURE FACILITIES & AMBIENCE OF THE INSTITUTION - 2020-2021

B.Sc. BIOCHEMISTRY

(NUMBER OF RESPONDENTS - 7)



	Q1	Q2	Q3	Q4	Q5	Q6	Q7	Q8	Q9	Q10	Q11	Q12	Q13	Q14	Q15	Q16	Q17	Q18	Q19	Q20
Strongly Agree (5)	6	4	5	7	5	4	6	4	5	5	4	5	7	5	4	5	4	4	5	4
Agree (4)	1	1	1	0	2	3	1	1	2	1	3	2	0	1	3	1	3	3	2	2
Neutral (3)	0	1	0	0	0	0	0	1	0	1	0	0	0	1	0	1	0	0	0	0
Disagree (2)	0	0	1	0	0	0	0	1	0	0	0	0	0	0	0	0	0	0	0	0
Strongly Disagree (1)	0	1	0	0	0	0	0	0	0	0	0	0	0	0	0	0	0	0	0	0



K. Kalan
PRINCIPAL
 PRINCE SHRI VENKATESHWARA
 ARTS AND SCIENCE COLLEGE
 CHENNAI-600 073.



PRINCE SHRI VENKATESWARA ARTS AND SCIENCE COLLEGE

Gowrivaldkam, Chennai-600073.

Affiliated to University of Madras, ISO 9001:2015 Certified Institution

EMPLOYER FEEDBACK ON CURRICULUM, INFRASTRUCTURE FACILITIES & AMBIENCE OF THE INSTITUTION – ANALYSIS REPORT

Academic Year

2020-21

Department

B.Sc.-Microbiology

Number of Respondents

4

Feedback Rate: Strongly Agree (5), Agree (4), Neutral (3), Disagree (2), Strongly Disagree (1)

S. No	Feedback on Curriculum, infrastructure facilities & ambience of the institution	5	4	3	2	1
1	Rate the students of PSVASC on general communication skills. (Related to Academic process and performance of students)	4	0	0	0	0
2	Rate the students of PSVASC on developing practical solutions to work place problems (Related to Academic process and performance of students)	3	0	0	1	0
3	Rate the students of PSVASC on working as a team (Related to Academic process and performance of students)	3	0	1	0	0
4	Rate the students of PSVASC on taking appropriate level of responsibility (Related to Academic process and performance of students)	3	1	0	0	0
5	Rate the students of PSVASC on Time Management (Related to Academic process and performance of students)	2	2	0	0	0
6	Rate the students of PSVASC on Decision Making (Related to Academic process and performance of students)	4	0	0	0	0
7	Rate the students of PSVASC on response to workplace challenges (Related to Academic process and performance of students)	2	0	1	0	1
8	Rate the student's ability to contribute for reaching the goal of organization (Related to Academic process and performance of students)	4	0	0	0	0



PRINCE SHRI VENKATESWARA ARTS AND SCIENCE COLLEGE

Gowrivakkam, Chennai-600073.

Affiliated to University of Madras, ISO 9001:2015 Certified Institution

9	Rate the students of PSVASC on technical knowledge and skills (Related to Academic process and performance of students)	2	1	0	1	0
10	Rate the students of PSVASC on leadership quality and taking up responsibilities (Related to Academic process and performance of students)	3	1	0	0	0
11	Rate the students of PSVASC on relationship with seniors / peers / subordinates and work ethics (Related to Academic process and performance of students)	3	0	1	0	0
12	Rate students of PSVASC on Creativity and Innovations. (Related to Academic process and performance of students)	4	0	0	0	0
13	Rate the students of PSVASC on lifelong learning and technology adaptability (Related to Academic process and performance of students)	3	1	0	0	0
14	Rate students of PSVASC on sustainability, environment awareness and social activities (Related to Academic process and performance of students)	2	2	0	0	0
15	Rate the learning ambience of the institution (Related to ambience of the institution)	3	0	1	0	0
16	Rate the functioning of Placement Cell (Related to ambience of the institution)	3	0	0	0	1
17	Rate the laboratory and research facilities of the institution (Related to infrastructure facility of the institution)	3	1	0	0	0
18	Rate the infrastructure facility of the institution to organize Pool Campus (Related to infrastructure facility of the institution)	4	0	0	0	0
19	Rate the WIFI facility with adequate bandwidth provided by the institution (Related to infrastructure facility of the institution)	2	0	1	1	0
20	Rate the overall impression of the institution (Related to infrastructure facility of the institution)	3	1	0	0	0



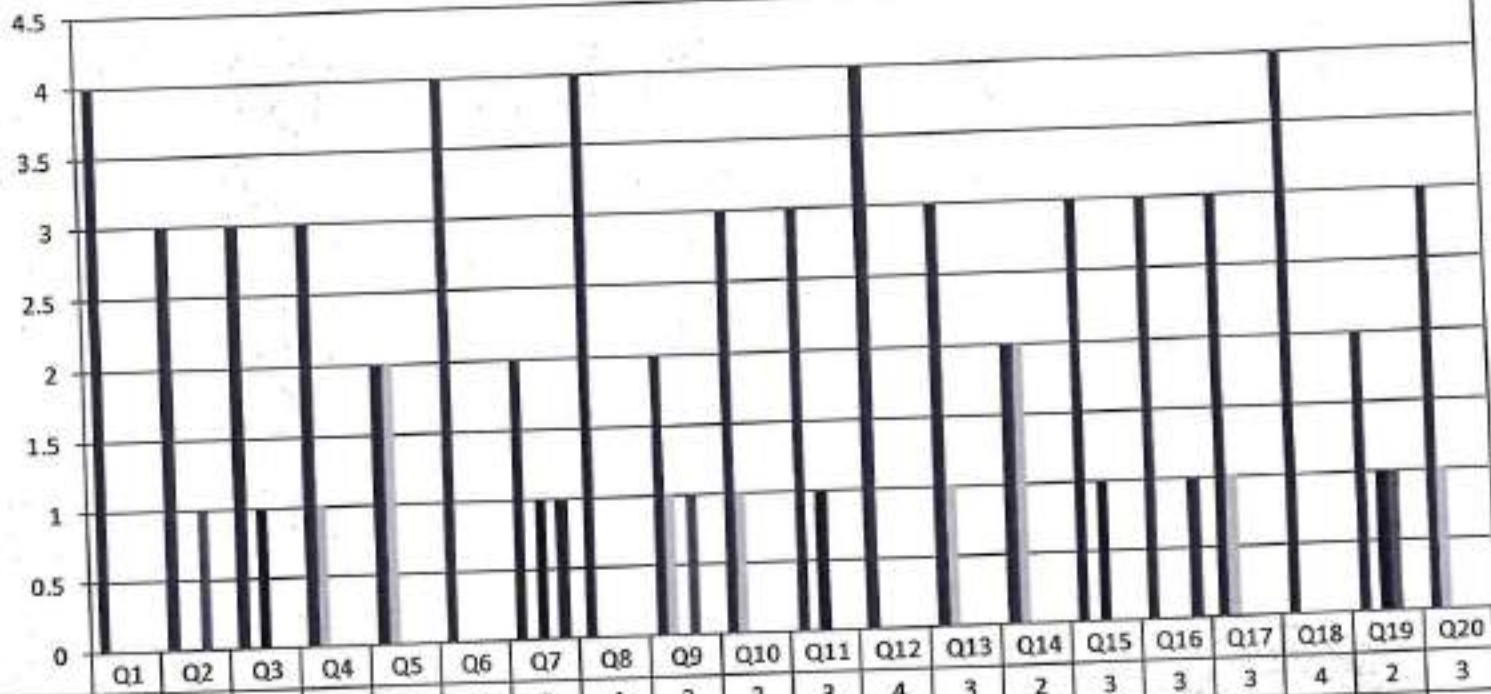
B. Kalpana
PRINCIPAL
PRINCE SHRI VENKATESHWARA
ARTS AND SCIENCE COLLEGE
GOWRIVAKKAM, CHENNAI-600 073.



PRINCE SHRI VENKATESWARA ARTS AND SCIENCE COLLEGE
Gowrivakkam, Chennai-600073.

Affiliated to University of Madras, ISO 9001:2015 Certified Institution

**EMPLOYER FEEDBACK ON CURRICULUM, INFRASTRUCTURE
FACILITIES & AMBIENCE OF THE INSTITUTION - 2020-2021**
B.Sc. MICROBIOLOGY
(NUMBER OF RESPONDENTS - 4)



P. Kalpana
PRINCIPAL
PRINCE SHRI VENKATESHWARA
ARTS AND SCIENCE COLLEGE
GOWRIVAKKAM, CHENNAI-600 073.



PRINCE SHRI VENKATESWARA ARTS AND SCIENCE COLLEGE

Gowrivaldkam, Chennai-600073.

Affiliated to University of Madras, ISO 9001:2015 Certified Institution

EMPLOYER FEEDBACK ON CURRICULUM, INFRASTRUCTURE FACILITIES & AMBIENCE OF THE INSTITUTION – ANALYSIS REPORT

Academic Year

2020-21

Department

B.Sc. Electronics and Communication Science

Number of Respondents

5

Feedback Rate: Strongly Agree (5), Agree (4), Neutral (3), Disagree (2), Strongly Disagree (1)

S. No	Feedback on Curriculum, infrastructure facilities & ambience of the institution	5	4	3	2	1
1	Rate the students of PSVASC on general communication skills. (Related to Academic process and performance of students)	3	1	0	0	1
2	Rate the students of PSVASC on developing practical solutions to work place problems (Related to Academic process and performance of students)	3	2	0	0	0
3	Rate the students of PSVASC on working as a team (Related to Academic process and performance of students)	5	0	0	0	0
4	Rate the students of PSVASC on taking appropriate level of responsibility (Related to Academic process and performance of students)	5	0	0	0	0
5	Rate the students of PSVASC on Time Management (Related to Academic process and performance of students)	3	2	0	0	0
6	Rate the students of PSVASC on Decision Making (Related to Academic process and performance of students)	4	0	1	0	0
7	Rate the students of PSVASC on response to workplace challenges (Related to Academic process and performance of students)	5	0	0	0	0
8	Rate the student's ability to contribute for reaching the goal of organization (Related to Academic process and performance of students)	3	1	0	1	0



PRINCE SHRI VENKATESWARA ARTS AND SCIENCE COLLEGE

Gowrivakkam, Chennai-600073.

Affiliated to University of Madras, ISO 9001:2015 Certified Institution

9	Rate the students of PSVASC on technical knowledge and skills (Related to Academic process and performance of students)	3	2	0	0	0
10	Rate the students of PSVASC on leadership quality and taking up responsibilities (Related to Academic process and performance of students)	4	1	0	0	0
11	Rate the students of PSVASC on relationship with seniors / peers / subordinates and work ethics (Related to Academic process and performance of students)	3	2	0	0	0
12	Rate students of PSVASC on Creativity and Innovations. (Related to Academic process and performance of students)	3	1	0	1	0
13	Rate the students of PSVASC on lifelong learning and technology adaptability (Related to Academic process and performance of students)	4	0	1	0	0
14	Rate students of PSVASC on sustainability, environment awareness and social activities (Related to Academic process and performance of students)	4	1	0	0	0
15	Rate the learning ambience of the institution (Related to ambience of the institution)	3	1	0	1	0
16	Rate the functioning of Placement Cell (Related to ambience of the institution)	5	0	0	0	0
17	Rate the laboratory and research facilities of the institution (Related to infrastructure facility of the institution)	3	2	0	0	0
18	Rate the infrastructure facility of the institution to organize Pool Campus (Related to infrastructure facility of the institution)	4	0	0	0	1
19	Rate the WIFI facility with adequate bandwidth provided by the institution (Related to infrastructure facility of the institution)	5	0	0	0	0
20	Rate the overall impression of the institution (Related to infrastructure facility of the institution)	4	1	0	0	0



B. Kalpana
PRINCIPAL
PRINCE SHRI VENKATESHWARA
ARTS AND SCIENCE COLLEGE
GOWRIVAKKAM, CHENNAI-600 073.

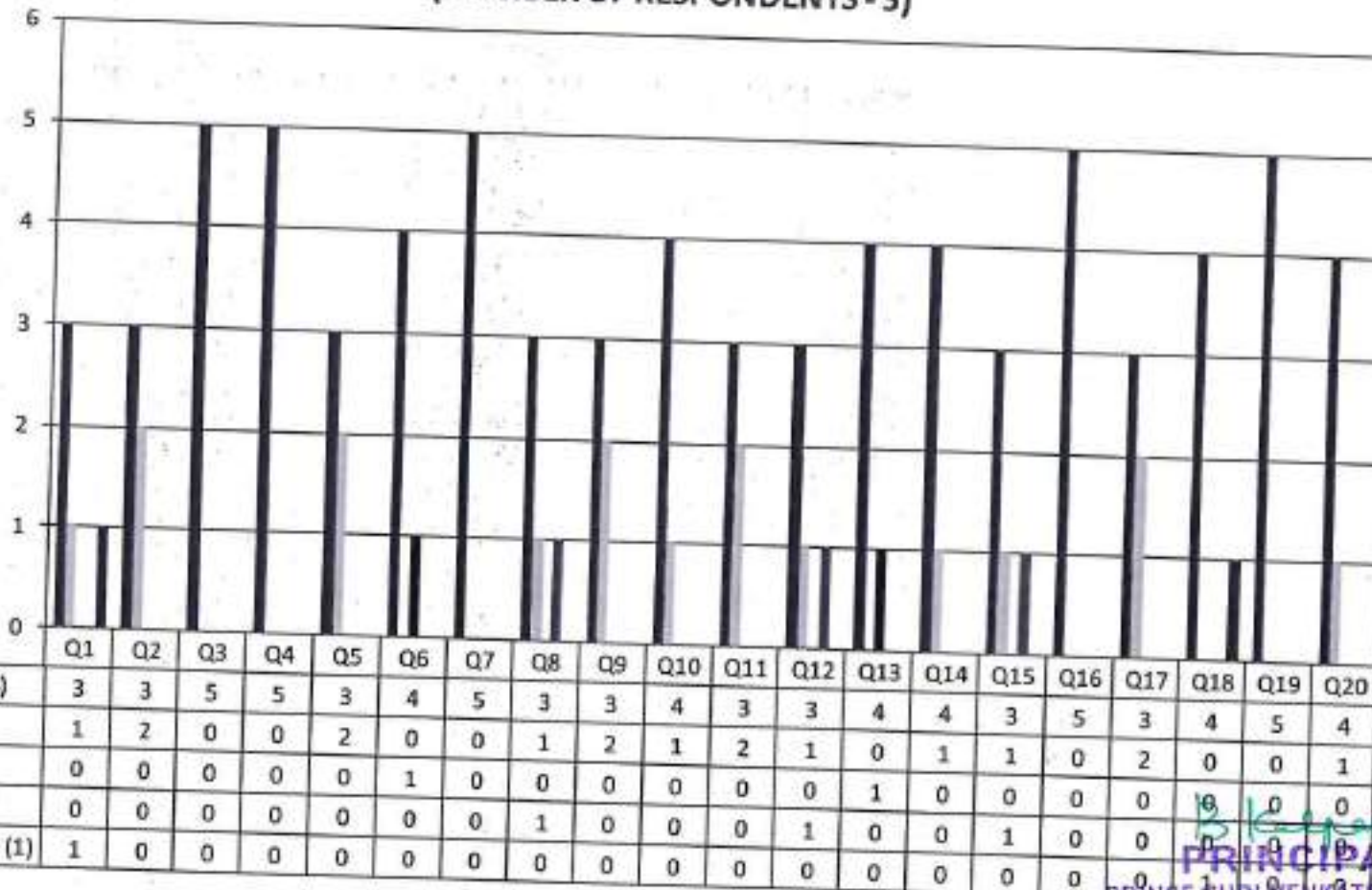


PRINCE SHRI VENKATESWARA ARTS AND SCIENCE COLLEGE

Gowrivakkam, Chennai-600073.

Affiliated to University of Madras, ISO 9001:2015 Certified Institution

**EMPLOYER FEEDBACK ON CURRICULUM, INFRASTRUCTURE
FACILITIES & AMBIENCE OF THE INSTITUTION - 2020-2021
B.Sc. ELECTRONICS AND COMMUNICATION SCIENCE
(NUMBER OF RESPONDENTS - 5)**



[Signature]
PRINCIPAL
PRINCE SHRI VENKATESHWARA
ARTS AND SCIENCE COLLEGE



PRINCE SHRI VENKATESWARA ARTS AND SCIENCE COLLEGE

Gowrivakkam, Chennai-600073.

Affiliated to University of Madras, ISO 9001:2015 Certified Institution

EMPLOYER FEEDBACK ON CURRICULUM, INFRASTRUCTURE FACILITIES & AMBIENCE OF THE INSTITUTION - ANALYSIS REPORT

Academic Year

2020-21

Department

B.Sc.-Computer Science

Number of Respondents

9

Feedback Rate: Strongly Agree (5), Agree (4), Neutral (3), Disagree (2), Strongly Disagree (1)

S. No	Feedback on Curriculum, infrastructure facilities & ambience of the institution	5	4	3	2	1
1	Rate the students of PSVASC on general communication skills. (Related to Academic process and performance of students)	6	2	0	0	1
2	Rate the students of PSVASC on developing practical solutions to work place problems (Related to Academic process and performance of students)	5	4	0	0	0
3	Rate the students of PSVASC on working as a team (Related to Academic process and performance of students)	5	2	1	1	0
4	Rate the students of PSVASC on taking appropriate level of responsibility (Related to Academic process and performance of students)	8	0	1	0	0
5	Rate the students of PSVASC on Time Management (Related to Academic process and performance of students)	8	1	0	0	0
6	Rate the students of PSVASC on Decision Making (Related to Academic process and performance of students)	6	2	0	0	1
7	Rate the students of PSVASC on response to workplace challenges (Related to Academic process and performance of students)	5	4	0	0	0
8	Rate the student's ability to contribute for reaching the goal of organization (Related to Academic process and performance of students)	5	3	1	0	0



PRINCE SHRI VENKATESWARA ARTS AND SCIENCE COLLEGE

Gowrivakkam, Chennai-600073.

Affiliated to University of Madras, ISO 9001:2015 Certified Institution

9	Rate the students of PSVASC on technical knowledge and skills (Related to Academic process and performance of students)	8	0	1	0	0
10	Rate the students of PSVASC on leadership quality and taking up responsibilities (Related to Academic process and performance of students)	6	2	0	1	0
11	Rate the students of PSVASC on relationship with seniors / peers / subordinates and work ethics (Related to Academic process and performance of students)	5	4	0	0	0
12	Rate students of PSVASC on Creativity and Innovations. (Related to Academic process and performance of students)	7	2	0	0	0
13	Rate the students of PSVASC on lifelong learning and technology adaptability (Related to Academic process and performance of students)	8	0	1	0	0
14	Rate students of PSVASC on sustainability, environment awareness and social activities (Related to Academic process and performance of students)	8	0	0	1	0
15	Rate the learning ambience of the institution (Related to ambience of the institution)	8	1	0	0	0
16	Rate the functioning of Placement Cell (Related to ambience of the institution)	8	0	1	0	0
17	Rate the laboratory and research facilities of the institution (Related to infrastructure facility of the institution)	7	2	0	0	0
18	Rate the infrastructure facility of the institution to organize Pool Campus (Related to infrastructure facility of the institution)	9	0	0	0	0
19	Rate the WIFI facility with adequate bandwidth provided by the institution (Related to infrastructure facility of the institution)	8	0	1	0	0
20	Rate the overall impression of the institution (Related to infrastructure facility of the institution)	5	3	0	0	1



B. Kalpana
PRINCIPAL
PRINCE SHRI VENKATESHWARA
ARTS AND SCIENCE COLLEGE
GOWRIVAKKAM, CHENNAI-600 073.

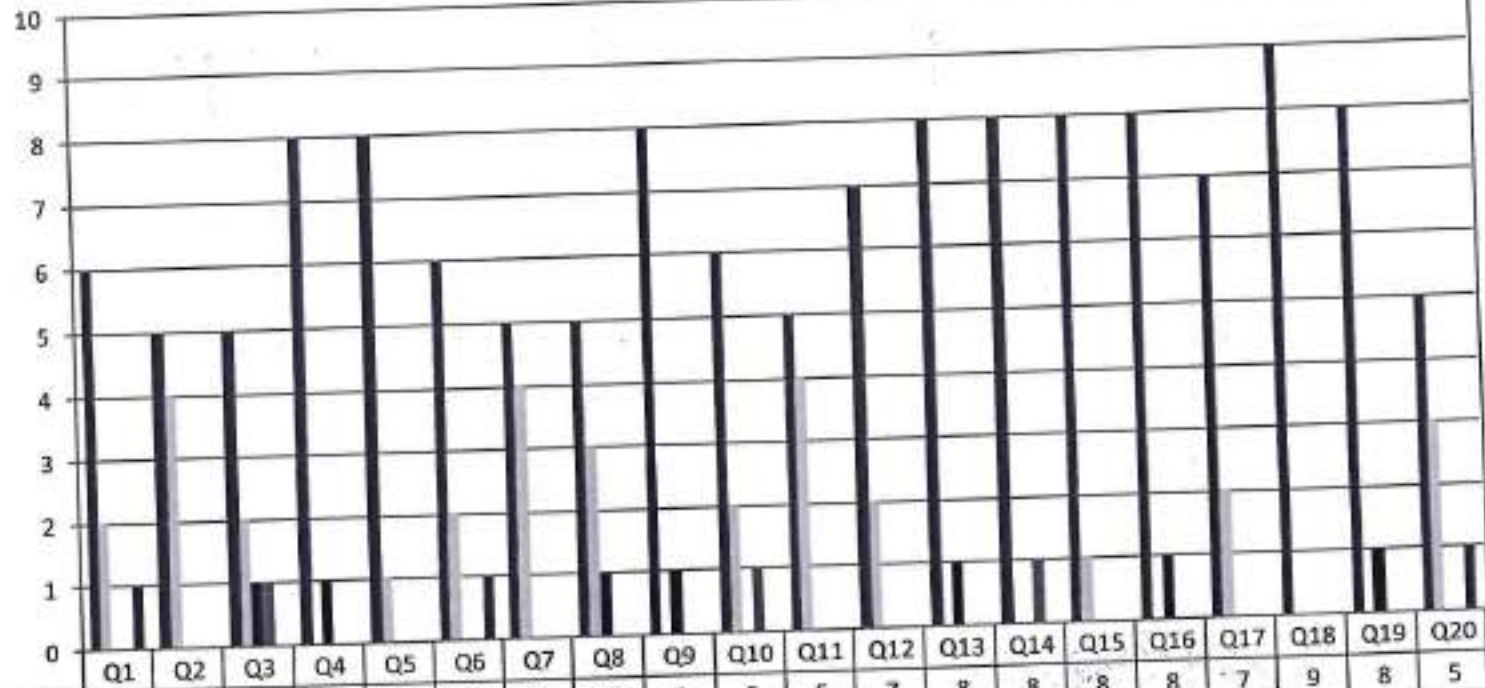


PRINCE SHRI VENKATESWARA ARTS AND SCIENCE COLLEGE

Gowrivakkam, Chennai-600073.

Affiliated to University of Madras, ISO 9001:2015 Certified Institution

**EMPLOYER FEEDBACK ON CURRICULUM, INFRASTRUCTURE
FACILITIES & AMBIENCE OF THE INSTITUTION - 2020-2021**
B.Sc. COMPUTER SCIENCE
(NUMBER OF RESPONDENTS - 9)



B. K. Srinivas
PRINCIPAL
PRINCE SHRI VENKATESHWARA
ARTS AND SCIENCE COLLEGE
GOWRIVAKKAM, CHENNAI-600 073.



PRINCE SHRI VENKATESWARA ARTS AND SCIENCE COLLEGE

Gowrivakkam, Chennai-600073.

Affiliated to University of Madras, ISO 9001:2015 Certified Institution

EMPLOYER FEEDBACK ON CURRICULUM, INFRASTRUCTURE FACILITIES & AMBIENCE OF THE INSTITUTION – ANALYSIS REPORT

Academic Year

2020-21

Department

B. Com-General

Number of Respondents

7

Feedback Rate: Strongly Agree (5), Agree (4), Neutral (3), Disagree (2), Strongly Disagree (1)

S. No	Feedback on Curriculum, infrastructure facilities & ambience of the institution	5	4	3	2	1
1	Rate the students of PSVASC on general communication skills. (Related to Academic process and performance of students)	5	1	1	0	0
2	Rate the students of PSVASC on developing practical solutions to work place problems (Related to Academic process and performance of students)	4	3	0	0	0
3	Rate the students of PSVASC on working as a team (Related to Academic process and performance of students)	5	2	0	0	0
4	Rate the students of PSVASC on taking appropriate level of responsibility (Related to Academic process and performance of students)	4	2	0	0	1
5	Rate the students of PSVASC on Time Management (Related to Academic process and performance of students)	7	0	0	0	0
6	Rate the students of PSVASC on Decision Making (Related to Academic process and performance of students)	5	1	1	0	0
7	Rate the students of PSVASC on response to workplace challenges (Related to Academic process and performance of students)	5	2	0	0	0
8	Rate the student's ability to contribute for reaching the goal of organization (Related to Academic process and performance of students)	6	0	0	1	0



PRINCE SHRI VENKATESWARA ARTS AND SCIENCE COLLEGE

Gowrivakkam, Chennai-600073.

Affiliated to University of Madras, ISO 9001:2015 Certified Institution

9	Rate the students of PSVASC on technical knowledge and skills (Related to Academic process and performance of students)	4	3	0	0	0
10	Rate the students of PSVASC on leadership quality and taking up responsibilities (Related to Academic process and performance of students)	5	1	1	0	0
11	Rate the students of PSVASC on relationship with seniors / peers / subordinates and work ethics (Related to Academic process and performance of students)	4	2	0	1	0
12	Rate students of PSVASC on Creativity and Innovations. (Related to Academic process and performance of students)	5	2	0	0	0
13	Rate the students of PSVASC on lifelong learning and technology adaptability (Related to Academic process and performance of students)	5	2	0	0	0
14	Rate students of PSVASC on sustainability, environment awareness and social activities (Related to Academic process and performance of students)	4	1	0	1	1
15	Rate the learning ambience of the institution (Related to ambience of the institution)	5	2	0	0	0
16	Rate the functioning of Placement Cell (Related to ambience of the institution)	5	2	0	0	0
17	Rate the laboratory and research facilities of the institution (Related to infrastructure facility of the institution)	5	1	1	0	0
18	Rate the infrastructure facility of the institution to organize Pool Campus (Related to infrastructure facility of the institution)	5	2	0	0	0
19	Rate the WIFI facility with adequate bandwidth provided by the institution (Related to infrastructure facility of the institution)	7	0	0	0	0
20	Rate the overall impression of the institution (Related to infrastructure facility of the institution)	4	3	0	0	0



B. Kalpana
PRINCIPAL
PRINCE SHRI VENKATESHWARA
ARTS AND SCIENCE COLLEGE
GOWRIVAKKAM, CHENNAI-600 073.



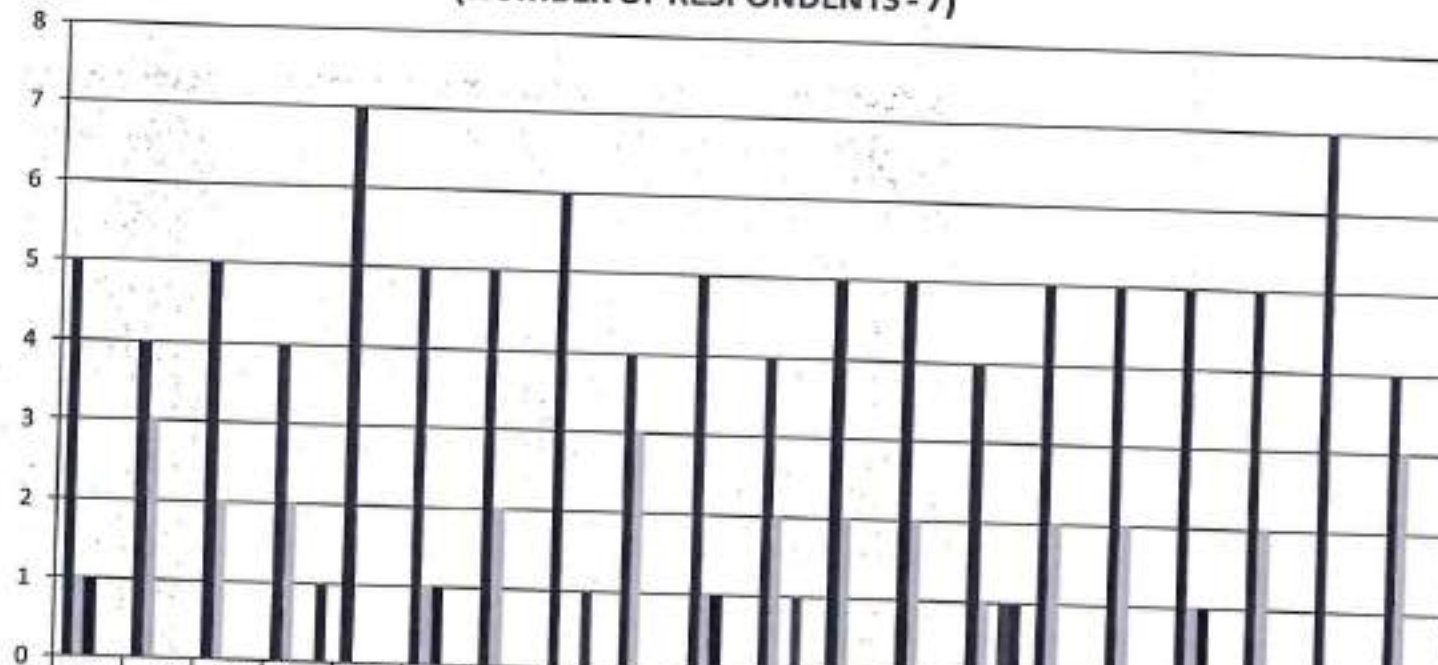
PRINCE SHRI VENKATESWARA ARTS AND SCIENCE COLLEGE

Gowrivakkam, Chennai-600073.

Affiliated to University of Madras, ISO 9001:2015 Certified Institution

EMPLOYER FEEDBACK ON CURRICULUM, INFRASTRUCTURE FACILITIES & AMBIENCE OF THE INSTITUTION - 2020-2021 B.COM (GENERAL)

(NUMBER OF RESPONDENTS - 7)



	Q1	Q2	Q3	Q4	Q5	Q6	Q7	Q8	Q9	Q10	Q11	Q12	Q13	Q14	Q15	Q16	Q17	Q18	Q19	Q20
Strongly Agree (5)	5	4	5	4	7	5	5	6	4	5	4	5	5	4	5	5	5	5	7	4
Agree (4)	1	3	2	2	0	1	2	0	3	1	2	2	2	1	2	2	1	2	0	3
Neutral (3)	1	0	0	0	0	1	0	0	0	1	0	0	0	0	0	0	0	0	0	3
Disagree (2)	0	0	0	0	0	0	0	1	0	0	1	0	0	1	0	0	0	0	0	0
Strongly Disagree (1)	0	0	0	1	0	0	0	0	0	0	0	0	0	1	0	0	0	0	0	0



PRINCE SHRI VENKATESHWARA ARTS AND SCIENCE COLLEGE
PRINCIPAL



PRINCE SHRI VENKATESWARA ARTS AND SCIENCE COLLEGE

Gowrivakkam, Chennai-600073.

Affiliated to University of Madras, ISO 9001:2015 Certified Institution

EMPLOYER FEEDBACK ON CURRICULUM, INFRASTRUCTURE FACILITIES & AMBIENCE OF THE INSTITUTION – ANALYSIS REPORT

Academic Year

2020-21

Department

BCA

Number of Respondents

8

Feedback Rate: Strongly Agree (5), Agree (4), Neutral (3), Disagree (2), Strongly Disagree (1)

S. No	Feedback on Curriculum, infrastructure facilities & ambience of the institution	5	4	3	2	1
1	Rate the students of PSVASC on general communication skills. (Related to Academic process and performance of students)	7	0	0	0	1
2	Rate the students of PSVASC on developing practical solutions to work place problems (Related to Academic process and performance of students)	6	2	0	0	0
3	Rate the students of PSVASC on working as a team (Related to Academic process and performance of students)	5	2	0	0	1
4	Rate the students of PSVASC on taking appropriate level of responsibility (Related to Academic process and performance of students)	7	1	0	0	0
5	Rate the students of PSVASC on Time Management (Related to Academic process and performance of students)	4	2	1	1	0
6	Rate the students of PSVASC on Decision Making (Related to Academic process and performance of students)	4	4	0	0	0
7	Rate the students of PSVASC on response to workplace challenges (Related to Academic process and performance of students)	6	2	0	0	0
8	Rate the student's ability to contribute for reaching the goal of organization (Related to Academic process and performance of students)	8	0	0	0	0



PRINCE SHRI VENKATESWARA ARTS AND SCIENCE COLLEGE

Gowrivakkam, Chennai-600073.

Affiliated to University of Madras, ISO 9001:2015 Certified Institution

9	Rate the students of PSVASC on technical knowledge and skills (Related to Academic process and performance of students)	6	1	0	0	1
10	Rate the students of PSVASC on leadership quality and taking up responsibilities (Related to Academic process and performance of students)	7	1	0	0	0
11	Rate the students of PSVASC on relationship with seniors / peers / subordinates and work ethics (Related to Academic process and performance of students)	4	3	1	0	0
12	Rate students of PSVASC on Creativity and Innovations. (Related to Academic process and performance of students)	4	2	1	0	1
13	Rate the students of PSVASC on lifelong learning and technology adaptability (Related to Academic process and performance of students)	7	1	0	0	0
14	Rate students of PSVASC on sustainability, environment awareness and social activities (Related to Academic process and performance of students)	6	2	0	0	0
15	Rate the learning ambience of the institution (Related to ambience of the institution)	5	3	0	0	0
16	Rate the functioning of Placement Cell (Related to ambience of the institution)	6	2	0	0	0
17	Rate the laboratory and research facilities of the institution (Related to infrastructure facility of the institution)	4	2	1	1	0
18	Rate the infrastructure facility of the institution to organize Pool Campus (Related to infrastructure facility of the institution)	5	3	0	0	0
19	Rate the WIFI facility with adequate bandwidth provided by the institution (Related to infrastructure facility of the institution)	6	1	0	1	0
20	Rate the overall impression of the institution (Related to infrastructure facility of the institution)	8	0	0	0	0



B. Kalpana
PRINCIPAL
PRINCE SHRI VENKATESHWARA
ARTS AND SCIENCE COLLEGE
GOWRIVAKKAM, CHENNAI-600 073.



PRINCE SHRI VENKATESWARA ARTS AND SCIENCE COLLEGE

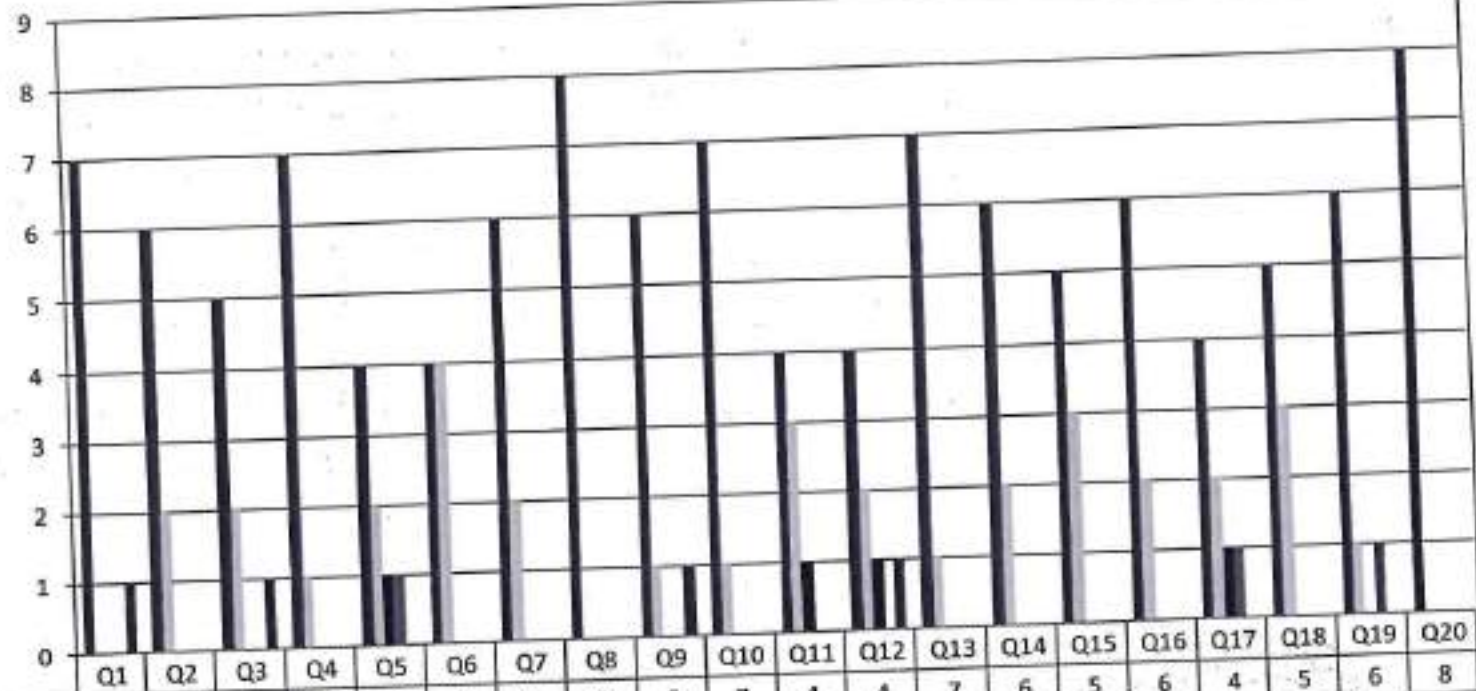
Gowrivakkam, Chennai-600073.

Affiliated to University of Madras, ISO 9001:2015 Certified Institution

EMPLOYER FEEDBACK ON CURRICULUM, INFRASTRUCTURE FACILITIES & AMBIENCE OF THE INSTITUTION - 2020-2021

BCA

(NUMBER OF RESPONDENTS - 8)



B. Kalpana
PRINCIPAL
 PRINCE SHRI VENKATESHWARA
 ARTS AND SCIENCE COLLEGE
 GOWRIVAKKAM, CHENNAI-600 073



PRINCE SHRI VENKATESWARA ARTS AND SCIENCE COLLEGE

Gowrivakkam, Chennai-600073.

Affiliated to University of Madras, ISO 9001:2015 Certified Institution

EMPLOYER FEEDBACK ON CURRICULUM, INFRASTRUCTURE FACILITIES & AMBIENCE OF THE INSTITUTION – ANALYSIS REPORT

Academic Year

2020-21

Department

B.Sc.-Biotechnology

Number of Respondents

4

Feedback Rate: Strongly Agree (5), Agree (4), Neutral (3), Disagree (2), Strongly Disagree (1)

S. No	Feedback on Curriculum, infrastructure facilities & ambience of the institution	5	4	3	2	1
1	Rate the students of PSVASC on general communication skills. (Related to Academic process and performance of students)	2	1	0	0	1
2	Rate the students of PSVASC on developing practical solutions to work place problems (Related to Academic process and performance of students)	3	0	1	0	0
3	Rate the students of PSVASC on working as a team (Related to Academic process and performance of students)	2	1	0	1	0
4	Rate the students of PSVASC on taking appropriate level of responsibility (Related to Academic process and performance of students)	3	1	0	0	0
5	Rate the students of PSVASC on Time Management (Related to Academic process and performance of students)	4	0	0	0	0
6	Rate the students of PSVASC on Decision Making (Related to Academic process and performance of students)	3	0	1	0	0
7	Rate the students of PSVASC on response to workplace challenges (Related to Academic process and performance of students)	2	1	0	0	1



PRINCE SHRI VENKATESWARA ARTS AND SCIENCE COLLEGE

Gowrivakkam, Chennai-600073.

Affiliated to University of Madras, ISO 9001:2015 Certified Institution

8	Rate the student's ability to contribute for reaching the goal of organization (Related to Academic process and performance of students)	4	0	0	0	0
9	Rate the students of PSVASC on technical knowledge and skills (Related to Academic process and performance of students)	3	1	0	0	0
10	Rate the students of PSVASC on leadership quality and taking up responsibilities (Related to Academic process and performance of students)	3	0	1	0	0
11	Rate the students of PSVASC on relationship with seniors / peers / subordinates and work ethics (Related to Academic process and performance of students)	4	0	0	0	0
12	Rate students of PSVASC on Creativity and Innovations. (Related to Academic process and performance of students)	2	2	0	0	0
13	Rate the students of PSVASC on lifelong learning and technology adaptability (Related to Academic process and performance of students)	3	0	0	1	0
14	Rate students of PSVASC on sustainability, environment awareness and social activities (Related to Academic process and performance of students)	3	1	0	0	0
15	Rate the learning ambience of the institution (Related to ambience of the institution)	4	0	0	0	0
16	Rate the functioning of Placement Cell (Related to ambience of the institution)	2	1	1	0	0
17	Rate the laboratory and research facilities of the institution (Related to infrastructure facility of the institution)	2	2	0	0	0
18	Rate the infrastructure facility of the institution to organize Pool Campus (Related to infrastructure facility of the institution)	3	0	0	1	0
19	Rate the WIFI facility with adequate bandwidth provided by the institution (Related to infrastructure facility of the institution)	2	1	0	0	1
20	Rate the overall impression of the institution (Related to infrastructure facility of the institution)	2	2	0	0	0



B. Kalpane
PRINCIPAL
PRINCE SHRI VENKATESHWARA
ARTS AND SCIENCE COLLEGE
GOWRIVAKKAM, CHENNAI-600 073.



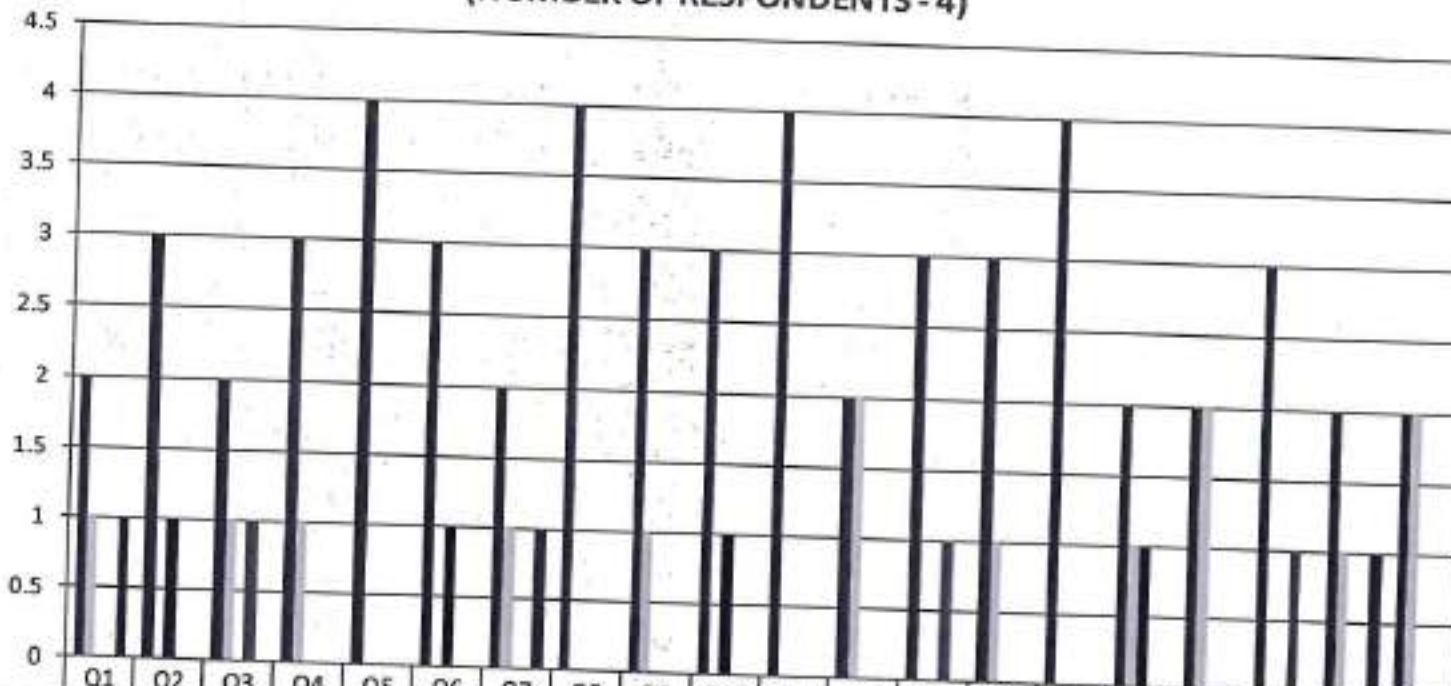
PRINCE SHRI VENKATESWARA ARTS AND SCIENCE COLLEGE

Gowrivaldkam, Chennai-600073.

Affiliated to University of Madras, ISO 9001:2015 Certified Institution

**EMPLOYER FEEDBACK ON CURRICULUM, INFRASTRUCTURE
FACILITIES & AMBIENCE OF THE INSTITUTION - 2020-2021**

B.Sc. BIOTECHNOLOGY
(NUMBER OF RESPONDENTS - 4)



	Q1	Q2	Q3	Q4	Q5	Q6	Q7	Q8	Q9	Q10	Q11	Q12	Q13	Q14	Q15	Q16	Q17	Q18	Q19	Q20
Strongly Agree (5)	2	3	2	3	4	3	2	4	3	3	4	2	3	3	4	2	2	3	2	2
Agree (4)	1	0	1	1	0	0	1	0	1	0	0	2	0	1	0	1	2	0	1	2
Neutral (3)	0	1	0	0	0	1	0	0	0	1	0	0	0	0	0	1	0	0	0	0
Disagree (2)	0	0	1	0	0	0	0	0	0	0	0	0	0	0	0	1	0	0	0	0
Strongly Disagree (1)	1	0	0	0	0	0	1	0	0	0	0	0	1	0	0	0	0	1	0	0



B. Kalpana
PRINCIPAL
PRINCE SHRI VENKATESHWARA
ARTS AND SCIENCE COLLEGE



PRINCE SHRI VENKATESWARA ARTS AND SCIENCE COLLEGE

Gowrivakkam, Chennai-600073.

Affiliated to University of Madras, ISO 9001:2015 Certified Institution

EMPLOYER FEEDBACK ON CURRICULUM, INFRASTRUCTURE FACILITIES & AMBIENCE OF THE INSTITUTION – ANALYSIS REPORT

Academic Year

2020-21

Department

B. Com - Accounting and Finance

Number of Respondents

6

Feedback Rate: Strongly Agree (5), Agree (4), Neutral (3), Disagree (2), Strongly Disagree (1)

S. No	Feedback on Curriculum, infrastructure facilities & ambience of the institution	5	4	3	2	1
1	Rate the students of PSVASC on general communication skills. (Related to Academic process and performance of students)	4	1	0	0	1
2	Rate the students of PSVASC on developing practical solutions to work place problems (Related to Academic process and performance of students)	3	2	1	0	0
3	Rate the students of PSVASC on working as a team (Related to Academic process and performance of students)	4	1	0	1	0
4	Rate the students of PSVASC on taking appropriate level of responsibility (Related to Academic process and performance of students)	4	2	0	0	0
5	Rate the students of PSVASC on Time Management (Related to Academic process and performance of students)	4	1	1	0	0
6	Rate the students of PSVASC on Decision Making (Related to Academic process and performance of students)	5	0	1	0	0
7	Rate the students of PSVASC on response to workplace challenges (Related to Academic process and performance of students)	3	2	0	0	1
8	Rate the student's ability to contribute for reaching the goal of organization (Related to Academic process and performance of students)	3	1	1	1	0



PRINCE SHRI VENKATESWARA ARTS AND SCIENCE COLLEGE

Gowrivakkam, Chennai-600073.

Affiliated to University of Madras, ISO 9001:2015 Certified Institution

9	Rate the students of PSVASC on technical knowledge and skills (Related to Academic process and performance of students)	6	0	0	0	0
10	Rate the students of PSVASC on leadership quality and taking up responsibilities (Related to Academic process and performance of students)	4	1	1	0	0
11	Rate the students of PSVASC on relationship with seniors / peers / subordinates and work ethics (Related to Academic process and performance of students)	3	3	0	0	0
12	Rate students of PSVASC on Creativity and Innovations. (Related to Academic process and performance of students)	5	1	0	0	0
13	Rate the students of PSVASC on lifelong learning and technology adaptability (Related to Academic process and performance of students)	4	1	0	1	0
14	Rate students of PSVASC on sustainability, environment awareness and social activities (Related to Academic process and performance of students)	6	0	0	0	0
15	Rate the learning ambience of the institution (Related to ambience of the institution)	5	1	0	0	0
16	Rate the functioning of Placement Cell (Related to ambience of the institution)	4	1	1	0	0
17	Rate the laboratory and research facilities of the institution (Related to infrastructure facility of the institution)	4	2	0	0	0
18	Rate the infrastructure facility of the institution to organize Pool Campus (Related to infrastructure facility of the institution)	5	0	0	1	0
19	Rate the WIFI facility with adequate bandwidth provided by the institution (Related to infrastructure facility of the institution)	5	0	0	0	1
20	Rate the overall impression of the institution (Related to infrastructure facility of the institution)	5	1	0	0	0



B. Kalpana
PRINCIPAL
PRINCE SHRI VENKATESHWARA
ARTS AND SCIENCE COLLEGE
GOWRIVAKKAM, CHENNAI-600 073.

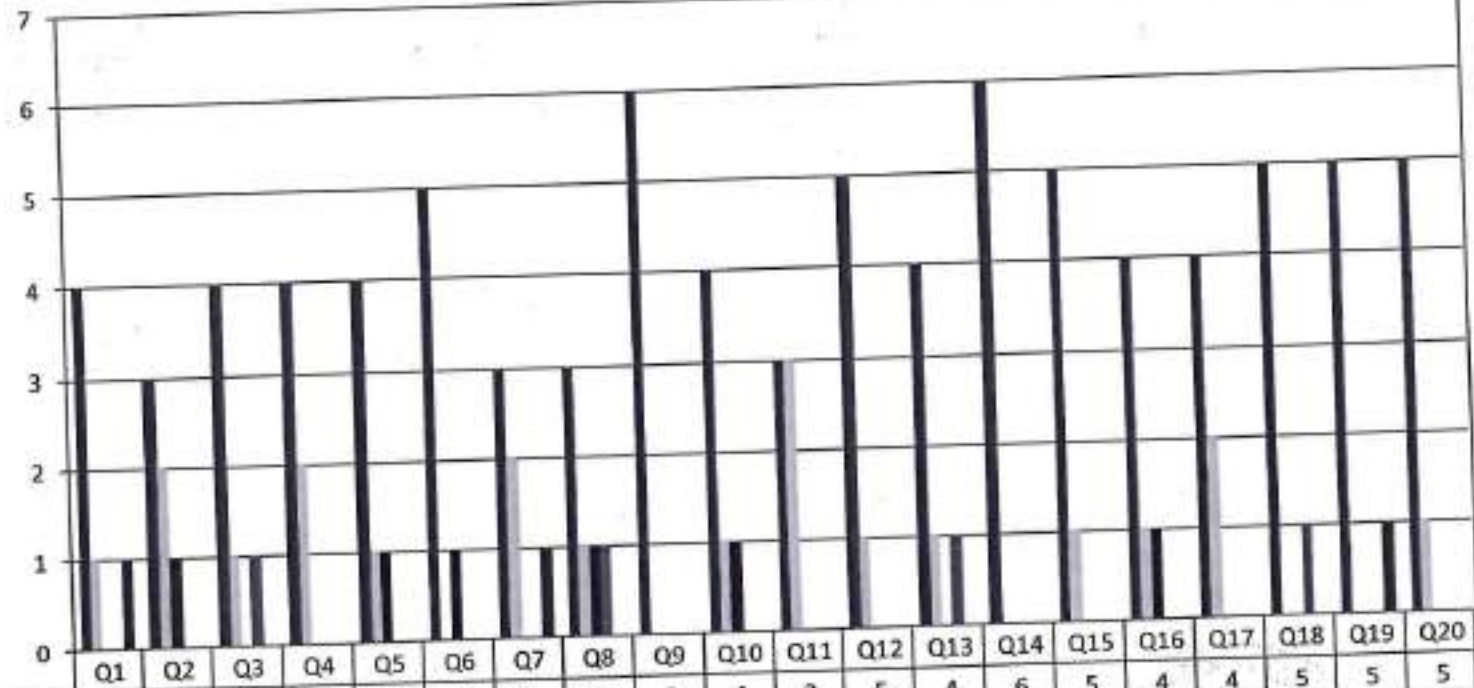


PRINCE SHRI VENKATESWARA ARTS AND SCIENCE COLLEGE

Gowrivalkkm, Chennai-600073.

Affiliated to University of Madras, ISO 9001:2015 Certified Institution

**EMPLOYER FEEDBACK ON CURRICULUM, INFRASTRUCTURE
FACILITIES & AMBIENCE OF THE INSTITUTION - 2020-2021
B.COM (ACCOUNTING AND FINANCE)
(NUMBER OF RESPONDENTS - 6)**



P. Kalpana
PRINCIPAL
PRINCE SHRI VENKATESHWARA
ARTS AND SCIENCE COLLEGE
GOWRIVALKKAM, CHENNAI-600 073



PRINCE SHRI VENKATESWARA ARTS AND SCIENCE COLLEGE

Gowrivakkam, Chennai-600073.

Affiliated to University of Madras, ISO 9001:2015 Certified Institution

EMPLOYER FEEDBACK ON CURRICULUM, INFRASTRUCTURE FACILITIES & AMBIENCE OF THE INSTITUTION – ANALYSIS REPORT

Academic Year

2020-21

Department

B.A. English

Number of Respondents

5

Feedback Rate: Strongly Agree (5), Agree (4), Neutral (3), Disagree (2), Strongly Disagree (1)

S. No	Feedback on Curriculum, infrastructure facilities & ambience of the institution	5	4	3	2	1
1	Rate the students of PSVASC on general communication skills. (Related to Academic process and performance of students)	3	1	0	0	1
2	Rate the students of PSVASC on developing practical solutions to work place problems (Related to Academic process and performance of students)	4	0	1	0	0
3	Rate the students of PSVASC on working as a team (Related to Academic process and performance of students)	3	1	0	1	0
4	Rate the students of PSVASC on taking appropriate level of responsibility (Related to Academic process and performance of students)	4	1	0	0	0
5	Rate the students of PSVASC on Time Management (Related to Academic process and performance of students)	3	0	2	0	0
6	Rate the students of PSVASC on Decision Making (Related to Academic process and performance of students)	4	0	1	0	0
7	Rate the students of PSVASC on response to workplace challenges (Related to Academic process and performance of students)	3	1	0	0	1
8	Rate the student's ability to contribute for reaching the goal of organization (Related to Academic process and performance of students)	3	0	1	1	0



PRINCE SHRI VENKATESWARA ARTS AND SCIENCE COLLEGE

Gowrivakkam, Chennai-600073.

Affiliated to University of Madras, ISO 9001:2015 Certified Institution

9	Rate the students of PSVASC on technical knowledge and skills (Related to Academic process and performance of students)	4	1	0	0	0
10	Rate the students of PSVASC on leadership quality and taking up responsibilities (Related to Academic process and performance of students)	4	0	1	0	0
11	Rate the students of PSVASC on relationship with seniors / peers / subordinates and work ethics (Related to Academic process and performance of students)	5	0	0	0	0
12	Rate students of PSVASC on Creativity and Innovations. (Related to Academic process and performance of students)	3	2	0	0	0
13	Rate the students of PSVASC on lifelong learning and technology adaptability (Related to Academic process and performance of students)	4	0	0	1	0
14	Rate students of PSVASC on sustainability, environment awareness and social activities (Related to Academic process and performance of students)	4	1	0	0	0
15	Rate the learning ambience of the institution (Related to ambience of the institution)	5	0	0	0	0
16	Rate the functioning of Placement Cell (Related to ambience of the institution)	3	1	1	0	0
17	Rate the laboratory and research facilities of the institution (Related to infrastructure facility of the institution)	3	2	0	0	0
18	Rate the infrastructure facility of the institution to organize Pool Campus (Related to infrastructure facility of the institution)	4	0	0	1	0
19	Rate the WIFI facility with adequate bandwidth provided by the institution (Related to infrastructure facility of the institution)	3	1	0	0	1
20	Rate the overall impression of the institution (Related to infrastructure facility of the institution)	3	2	0	0	0



B. Kalpana
PRINCIPAL
PRINCE SHRI VENKATESHWARA
ARTS AND SCIENCE COLLEGE
GOWRIVAKKAM, CHENNAI-600 073



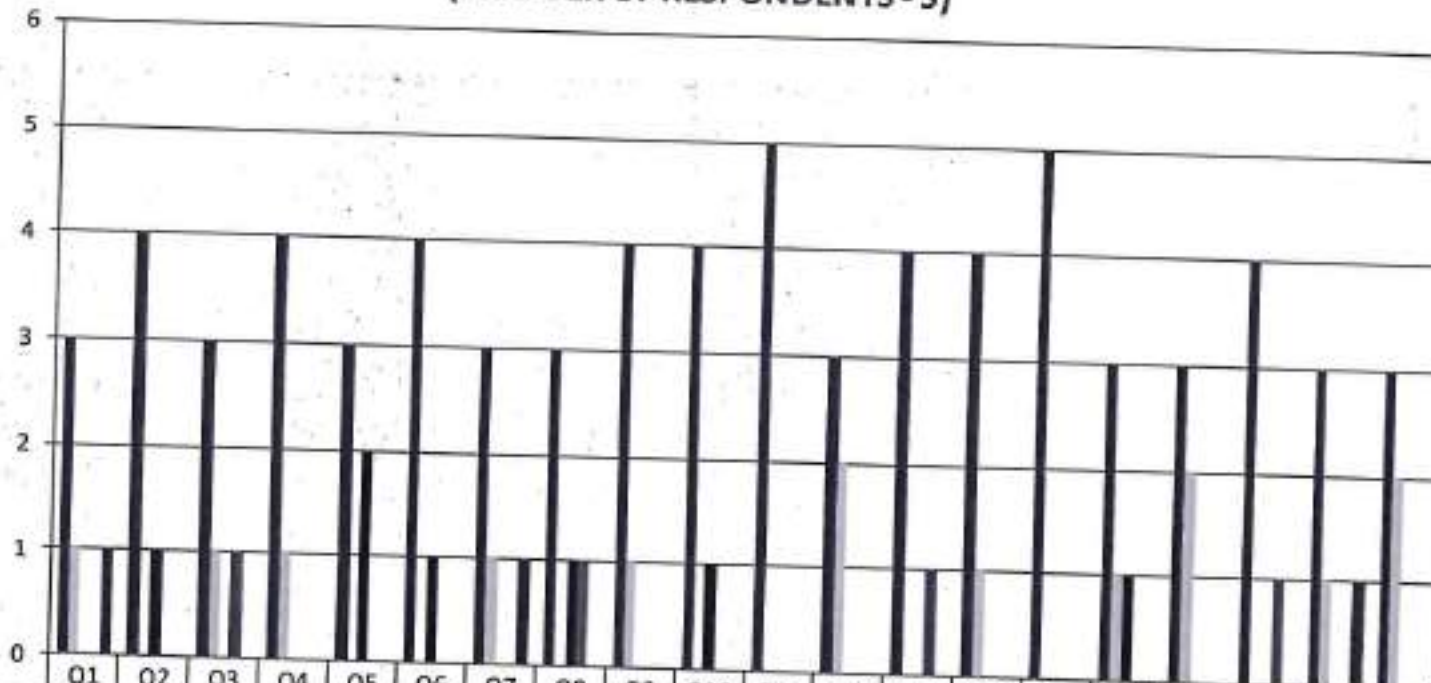
PRINCE SHRI VENKATESWARA ARTS AND SCIENCE COLLEGE

Gowrivakkam, Chennai-600073.

Affiliated to University of Madras, ISO 9001:2015 Certified Institution

**EMPLOYER FEEDBACK ON CURRICULUM, INFRASTRUCTURE
FACILITIES & AMBIENCE OF THE INSTITUTION - 2020-2021
B.A. ENGLISH**

(NUMBER OF RESPONDENTS - 5)



	Q1	Q2	Q3	Q4	Q5	Q6	Q7	Q8	Q9	Q10	Q11	Q12	Q13	Q14	Q15	Q16	Q17	Q18	Q19	Q20
Strongly Agree (5)	3	4	3	4	3	4	3	3	4	4	5	3	4	4	5	3	3	4	3	3
Agree (4)	1	0	1	1	0	0	1	0	1	0	0	2	0	1	0	1	2	0	1	2
Neutral (3)	0	1	0	0	2	1	0	1	0	1	0	0	0	0	0	1	0	0	0	0
Disagree (2)	0	0	1	0	0	0	0	1	0	0	0	0	1	0	0	0	0	0	0	0
Strongly Disagree (1)	1	0	0	0	0	0	1	0	0	0	0	0	0	0	0	0	0	1	0	0



P. S. S. S. S.
PRINCIPAL
PRINCE SHRI VENKATESHWARA
ARTS AND SCIENCE COLLEGE



PRINCE SHRI VENKATESWARA ARTS AND SCIENCE COLLEGE

Gowrivakkam, Chennai-600073.

Affiliated to University of Madras, ISO 9001:2015 Certified Institution

EMPLOYER FEEDBACK ON CURRICULUM, INFRASTRUCTURE FACILITIES & AMBIENCE OF THE INSTITUTION – ANALYSIS REPORT

Academic Year

2020-21

Department

M.Sc. Microbiology

Number of Respondents

3

Feedback Rate: Strongly Agree (5), Agree (4), Neutral (3), Disagree (2), Strongly Disagree (1)

S. No	Feedback on Curriculum, infrastructure facilities & ambience of the institution	5	4	3	2	1
1	Rate the students of PSVASC on general communication skills. (Related to Academic process and performance of students)	1	1	0	0	1
2	Rate the students of PSVASC on developing practical solutions to work place problems (Related to Academic process and performance of students)	1	2	0	0	0
3	Rate the students of PSVASC on working as a team (Related to Academic process and performance of students)	2	1	0	0	0
4	Rate the students of PSVASC on taking appropriate level of responsibility (Related to Academic process and performance of students)	1	2	0	0	0
5	Rate the students of PSVASC on Time Management (Related to Academic process and performance of students)	3	0	0	0	0
6	Rate the students of PSVASC on Decision Making (Related to Academic process and performance of students)	2	1	0	0	0
7	Rate the students of PSVASC on response to workplace challenges (Related to Academic process and performance of students)	1	2	0	0	0
8	Rate the student's ability to contribute for reaching the goal of organization (Related to Academic process and performance of students)	2	0	0	1	0



PRINCE SHRI VENKATESWARA ARTS AND SCIENCE COLLEGE

Gowrivakkam, Chennai-600073.

Affiliated to University of Madras, ISO 9001:2015 Certified Institution

9	Rate the students of PSVASC on technical knowledge and skills (Related to Academic process and performance of students)	3	0	0	0	0
10	Rate the students of PSVASC on leadership quality and taking up responsibilities (Related to Academic process and performance of students)	3	0	0	0	0
11	Rate the students of PSVASC on relationship with seniors / peers / subordinates and work ethics (Related to Academic process and performance of students)	2	1	0	0	0
12	Rate students of PSVASC on Creativity and Innovations. (Related to Academic process and performance of students)	2	0	0	1	0
13	Rate the students of PSVASC on lifelong learning and technology adaptability (Related to Academic process and performance of students)	2	0	1	0	0
14	Rate students of PSVASC on sustainability, environment awareness and social activities (Related to Academic process and performance of students)	2	1	0	0	0
15	Rate the learning ambience of the institution (Related to ambience of the institution)	3	0	0	0	0
16	Rate the functioning of Placement Cell (Related to ambience of the institution)	3	0	0	0	0
17	Rate the laboratory and research facilities of the institution (Related to infrastructure facility of the institution)	3	0	0	0	0
18	Rate the infrastructure facility of the institution to organize Pool Campus (Related to infrastructure facility of the institution)	2	0	0	0	1
19	Rate the WIFI facility with adequate bandwidth provided by the institution (Related to infrastructure facility of the institution)	2	1	0	0	0
20	Rate the overall impression of the institution (Related to infrastructure facility of the institution)	2	1	0	0	0

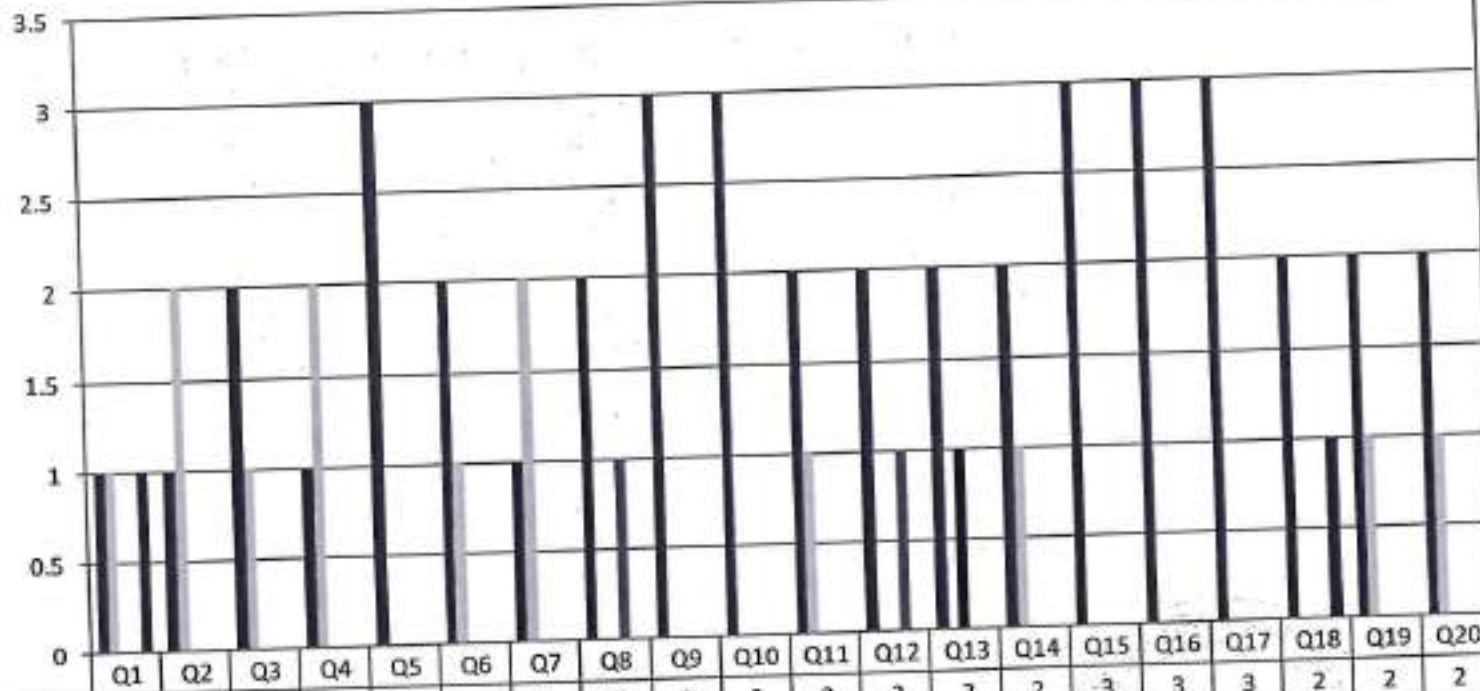


B. Kelpana
PRINCIPAL
PRINCE SHRI VENKATESHWARA
ARTS AND SCIENCE COLLEGE
GOWRIVAKKAM, CHENNAI-600 073.



PRINCE SHRI VENKATESWARA ARTS AND SCIENCE COLLEGE
 Gowrivakkam, Chennai-600073.
 Affiliated to University of Madras, ISO 9001:2015 Certified Institution

**EMPLOYER FEEDBACK ON CURRICULUM, INFRASTRUCTURE
 FACILITIES & AMBIENCE OF THE INSTITUTION - 2020-2021**
M.Sc. MICROBIOLOGY
 (NUMBER OF RESPONDENTS - 3)



	Q1	Q2	Q3	Q4	Q5	Q6	Q7	Q8	Q9	Q10	Q11	Q12	Q13	Q14	Q15	Q16	Q17	Q18	Q19	Q20
Strongly Agree (5)	1	1	2	1	3	2	1	2	3	3	2	2	2	2	3	3	3	2	2	2
Agree (4)	1	2	1	2	0	1	2	0	0	0	1	0	0	1	0	0	0	0	0	0
Neutral (3)	0	0	0	0	0	0	0	0	0	0	0	0	1	0	0	0	0	0	0	0
Disagree (2)	0	0	0	0	0	0	0	1	0	0	0	1	0	0	0	0	0	0	0	0
Strongly Disagree (1)	1	0	0	0	0	0	0	0	0	0	0	0	0	0	0	0	0	0	0	0



PRINCE SHRI VENKATESWARA
ARTS AND SCIENCE COLLEGE
 CHENNAI-600 073



PRINCE SHRI VENKATESWARA ARTS AND SCIENCE COLLEGE

Gowrivakkam, Chennai-600073.

Affiliated to University of Madras, ISO 9001:2015 Certified Institution

EMPLOYER FEEDBACK ON CURRICULUM, INFRASTRUCTURE FACILITIES & AMBIENCE OF THE INSTITUTION – ANALYSIS REPORT

Academic Year

2020-21

Department

M.Sc. Computer Science

Number of Respondents

6

Feedback Rate: Strongly Agree (5), Agree (4), Neutral (3), Disagree (2), Strongly Disagree (1)

S. No	Feedback on Curriculum, infrastructure facilities & ambience of the institution	5	4	3	2	1
1	Rate the students of PSVASC on general communication skills. (Related to Academic process and performance of students)	3	2	0	0	1
2	Rate the students of PSVASC on developing practical solutions to work place problems (Related to Academic process and performance of students)	3	3	0	0	0
3	Rate the students of PSVASC on working as a team (Related to Academic process and performance of students)	4	2	0	0	0
4	Rate the students of PSVASC on taking appropriate level of responsibility (Related to Academic process and performance of students)	3	3	0	0	0
5	Rate the students of PSVASC on Time Management (Related to Academic process and performance of students)	5	1	0	0	0
6	Rate the students of PSVASC on Decision Making (Related to Academic process and performance of students)	4	2	0	0	0
7	Rate the students of PSVASC on response to workplace challenges (Related to Academic process and performance of students)	3	3	0	0	0
8	Rate the student's ability to contribute for reaching the goal of organization (Related to Academic process and performance of students)	4	1	0	1	0



PRINCE SHRI VENKATESWARA ARTS AND SCIENCE COLLEGE

Gowrivakkam, Chennai-600073.

Affiliated to University of Madras, ISO 9001:2015 Certified Institution

9	Rate the students of PSVASC on technical knowledge and skills (Related to Academic process and performance of students)	5	1	0	0	0
10	Rate the students of PSVASC on leadership quality and taking up responsibilities (Related to Academic process and performance of students)	5	1	0	0	0
11	Rate the students of PSVASC on relationship with seniors / peers / subordinates and work ethics (Related to Academic process and performance of students)	4	2	0	0	0
12	Rate students of PSVASC on Creativity and Innovations. (Related to Academic process and performance of students)	4	1	0	1	0
13	Rate the students of PSVASC on lifelong learning and technology adaptability (Related to Academic process and performance of students)	4	1	1	0	0
14	Rate students of PSVASC on sustainability, environment awareness and social activities (Related to Academic process and performance of students)	4	2	0	0	0
15	Rate the learning ambience of the institution (Related to ambience of the institution)	5	1	0	0	0
16	Rate the functioning of Placement Cell (Related to ambience of the institution)	5	1	0	0	0
17	Rate the laboratory and research facilities of the institution (Related to infrastructure facility of the institution)	5	1	0	0	0
18	Rate the infrastructure facility of the institution to organize Pool Campus (Related to infrastructure facility of the institution)	4	1	0	0	1
19	Rate the WIFI facility with adequate bandwidth provided by the institution (Related to infrastructure facility of the institution)	4	2	0	0	0
20	Rate the overall impression of the institution (Related to infrastructure facility of the institution)	4	2	0	0	0



B. Kalpana
PRINCIPAL
PRINCE SHRI VENKATESHWARA
ARTS AND SCIENCE COLLEGE
GOWRIVAKKAM, CHENNAI-600 073.



PRINCE SHRI VENKATESWARA ARTS AND SCIENCE COLLEGE

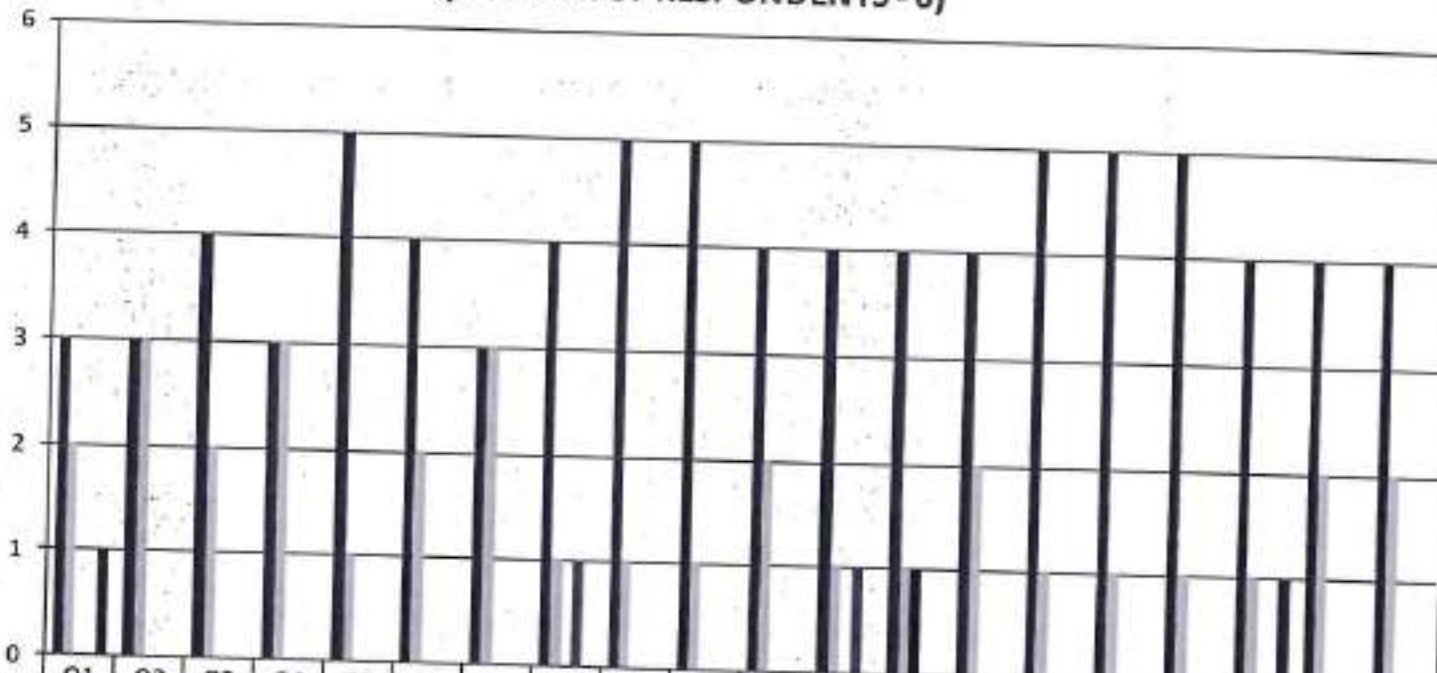
Gowrivakkam, Chennai-600073.

Affiliated to University of Madras, ISO 9001:2015 Certified Institution

**EMPLOYER FEEDBACK ON CURRICULUM, INFRASTRUCTURE
FACILITIES & AMBIENCE OF THE INSTITUTION - 2020-2021**

M.Sc. COMPUTER SCIENCE

(NUMBER OF RESPONDENTS - 6)



	Q1	Q2	Q3	Q4	Q5	Q6	Q7	Q8	Q9	Q10	Q11	Q12	Q13	Q14	Q15	Q16	Q17	Q18	Q19	Q20
Strongly Agree (5)	3	3	4	3	5	4	3	4	5	5	4	4	4	4	5	5	5	4	4	4
Agree (4)	2	3	2	3	1	2	3	1	1	1	2	1	1	2	1	1	1	1	2	2
Neutral (3)	0	0	0	0	0	0	0	0	0	0	0	0	1	0	0	0	0	0	0	0
Disagree (2)	0	0	0	0	0	0	0	1	0	0	0	1	0	0	0	0	0	0	0	0
Strongly Disagree (1)	1	0	0	0	0	0	0	0	0	0	0	0	0	0	0	0	0	0	0	0



Principals
PRINCIPAL
 PRINCE SHRI VENKATESHWARA
 ARTS AND SCIENCE COLLEGE
 GOWRIVAKKAM, CHENNAI - 600073



PRINCE SHRI VENKATESWARA ARTS AND SCIENCE COLLEGE

Gowrivakkam, Chennai-600073.

Affiliated to University of Madras, ISO 9001:2015 Certified Institution

EMPLOYER FEEDBACK ON CURRICULUM, INFRASTRUCTURE FACILITIES & AMBIENCE OF THE INSTITUTION – ANALYSIS REPORT

Academic Year

2020-21

Department

M.Sc. Biochemistry

Number of Respondents

7

Feedback Rate: Strongly Agree (5), Agree (4), Neutral (3), Disagree (2), Strongly Disagree (1)

S. No	Feedback on Curriculum, infrastructure facilities & ambience of the institution	5	4	3	2	1
1	Rate the students of PSVASC on general communication skills. (Related to Academic process and performance of students)	3	3	0	0	1
2	Rate the students of PSVASC on developing practical solutions to work place problems (Related to Academic process and performance of students)	3	4	0	0	0
3	Rate the students of PSVASC on working as a team (Related to Academic process and performance of students)	4	3	0	0	0
4	Rate the students of PSVASC on taking appropriate level of responsibility (Related to Academic process and performance of students)	3	4	0	0	0
5	Rate the students of PSVASC on Time Management (Related to Academic process and performance of students)	5	2	0	0	0
6	Rate the students of PSVASC on Decision Making (Related to Academic process and performance of students)	4	3	0	0	0
7	Rate the students of PSVASC on response to workplace challenges (Related to Academic process and performance of students)	3	4	0	0	0
8	Rate the student's ability to contribute for reaching the goal of organization (Related to Academic process and performance of students)	4	2	0	1	0



PRINCE SHRI VENKATESWARA ARTS AND SCIENCE COLLEGE

Gowrivakkam, Chennai-600073.

Affiliated to University of Madras, ISO 9001:2015 Certified Institution

9	Rate the students of PSVASC on technical knowledge and skills (Related to Academic process and performance of students)	5	2	0	0	0
10	Rate the students of PSVASC on leadership quality and taking up responsibilities (Related to Academic process and performance of students)	5	2	0	0	0
11	Rate the students of PSVASC on relationship with seniors / peers / subordinates and work ethics (Related to Academic process and performance of students)	4	3	0	0	0
12	Rate students of PSVASC on Creativity and Innovations. (Related to Academic process and performance of students)	4	2	0	1	0
13	Rate the students of PSVASC on lifelong learning and technology adaptability (Related to Academic process and performance of students)	4	2	1	0	0
14	Rate students of PSVASC on sustainability, environment awareness and social activities (Related to Academic process and performance of students)	4	3	0	0	0
15	Rate the learning ambience of the institution (Related to ambience of the institution)	5	2	0	0	0
16	Rate the functioning of Placement Cell (Related to ambience of the institution)	5	2	0	0	0
17	Rate the laboratory and research facilities of the institution (Related to infrastructure facility of the institution)	5	2	0	0	0
18	Rate the infrastructure facility of the institution to organize Pool Campus (Related to infrastructure facility of the institution)	4	2	0	0	1
19	Rate the WIFI facility with adequate bandwidth provided by the institution (Related to infrastructure facility of the institution)	4	3	0	0	0
20	Rate the overall impression of the institution (Related to infrastructure facility of the institution)	4	3	0	0	0



B. Kalpana
PRINCIPAL
PRINCE SHRI VENKATESHWARA
ARTS AND SCIENCE COLLEGE
GOWRIVAKKAM, CHENNAI-600 073.



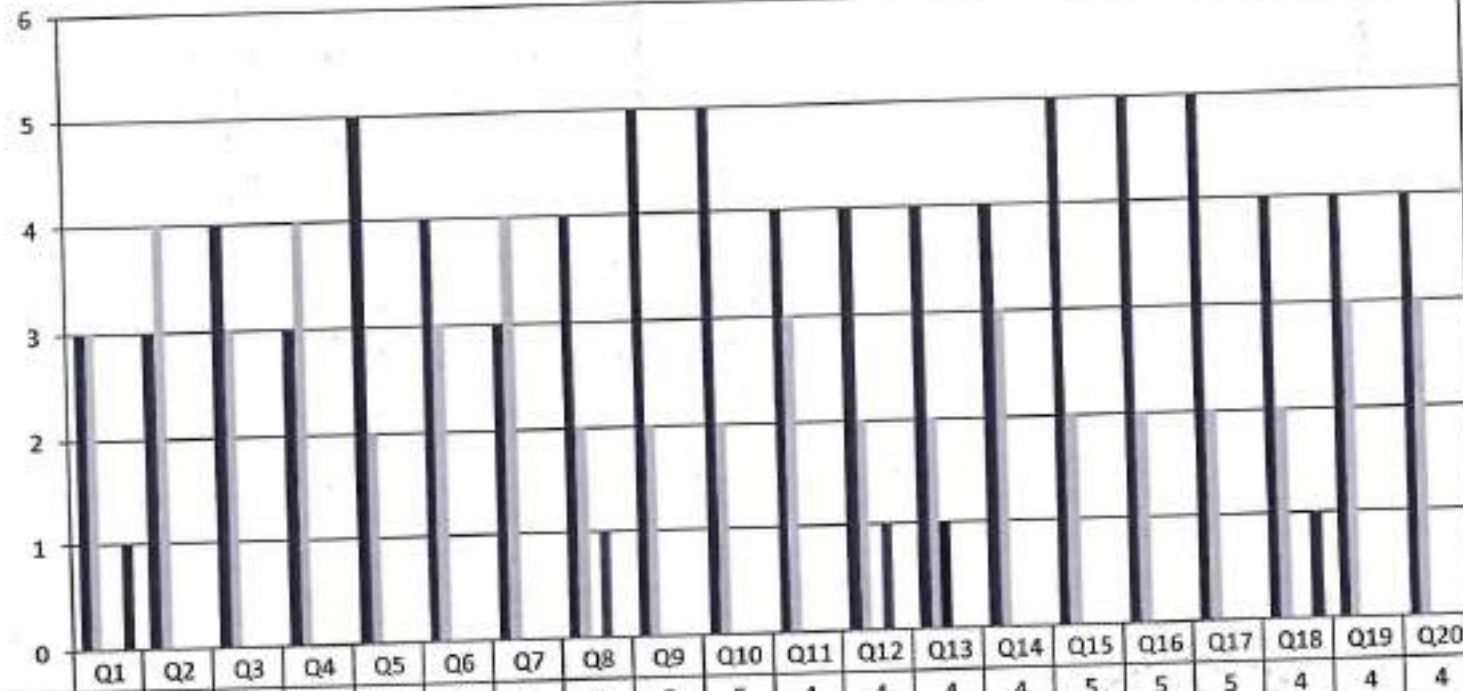
PRINCE SHRI VENKATESWARA ARTS AND SCIENCE COLLEGE

Gowrivakkam, Chennai-600073.

Affiliated to University of Madras, ISO 9001:2015 Certified Institution

**EMPLOYER FEEDBACK ON CURRICULUM, INFRASTRUCTURE
FACILITIES & AMBIENCE OF THE INSTITUTION - 2020-2021**

M.Sc. BIOCHEMISTRY
(NUMBER OF RESPONDENTS - 7)



B. Kalpana
PRINCIPAL
PRINCE SHRI VENKATESWARA
ARTS AND SCIENCE COLLEGE
GOWRIVAKKAM, CHENNAI-600 073



PRINCE SHRI VENKATESWARA ARTS AND SCIENCE COLLEGE

Gowrivaikam, Chennai-600073.

Affiliated to University of Madras, ISO 9001:2015 Certified Institution

EMPLOYER FEEDBACK ON CURRICULUM, INFRASTRUCTURE FACILITIES & AMBIENCE OF THE INSTITUTION – ANALYSIS REPORT

Academic Year

2020-21

Department

M.Sc. Biotechnology

Number of Respondents

6

Feedback Rate: Strongly Agree (5), Agree (4), Neutral (3), Disagree (2), Strongly Disagree (1)

S. No	Feedback on Curriculum, infrastructure facilities & ambience of the institution	5	4	3	2	1
1	Rate the students of PSVASC on general communication skills. (Related to Academic process and performance of students)	3	2	0	1	0
2	Rate the students of PSVASC on developing practical solutions to work place problems (Related to Academic process and performance of students)	5	1	0	0	0
3	Rate the students of PSVASC on working as a team (Related to Academic process and performance of students)	3	1	2	0	0
4	Rate the students of PSVASC on taking appropriate level of responsibility (Related to Academic process and performance of students)	4	1	1	0	0
5	Rate the students of PSVASC on Time Management (Related to Academic process and performance of students)	4	1	0	0	1
6	Rate the students of PSVASC on Decision Making (Related to Academic process and performance of students)	4	1	0	1	0
7	Rate the students of PSVASC on response to workplace challenges (Related to Academic process and performance of students)	5	1	0	0	0
8	Rate the student's ability to contribute for reaching the goal of organization (Related to Academic process and performance of students)	4	1	1	0	0



PRINCE SHRI VENKATESWARA ARTS AND SCIENCE COLLEGE

Gowrivakkam, Chennai-600073.

Affiliated to University of Madras, ISO 9001:2015 Certified Institution

9	Rate the students of PSVASC on technical knowledge and skills (Related to Academic process and performance of students)	5	1	0	0	0
10	Rate the students of PSVASC on leadership quality and taking up responsibilities (Related to Academic process and performance of students)	3	3	0	0	0
11	Rate the students of PSVASC on relationship with seniors / peers / subordinates and work ethics (Related to Academic process and performance of students)	4	1	0	1	0
12	Rate students of PSVASC on Creativity and Innovations. (Related to Academic process and performance of students)	4	2	0	0	0
13	Rate the students of PSVASC on lifelong learning and technology adaptability (Related to Academic process and performance of students)	4	1	0	0	1
14	Rate students of PSVASC on sustainability, environment awareness and social activities (Related to Academic process and performance of students)	4	1	1	0	0
15	Rate the learning ambience of the institution (Related to ambience of the institution)	3	2	0	1	0
16	Rate the functioning of Placement Cell (Related to ambience of the institution)	5	1	0	0	0
17	Rate the laboratory and research facilities of the institution (Related to infrastructure facility of the institution)	5	1	0	0	0
18	Rate the infrastructure facility of the institution to organize Pool Campus (Related to infrastructure facility of the institution)	3	1	2	0	0
19	Rate the WIFI facility with adequate bandwidth provided by the institution (Related to infrastructure facility of the institution)	4	1	1	0	0
20	Rate the overall impression of the institution (Related to infrastructure facility of the institution)	3	3	0	0	0



B. Kalpana
PRINCIPAL

PRINCE SHRI VENKATESHWARA
ARTS AND SCIENCE COLLEGE
GOWRIVAKKAM, CHENNAI-600 073.



PRINCE SHRI VENKATESWARA ARTS AND SCIENCE COLLEGE

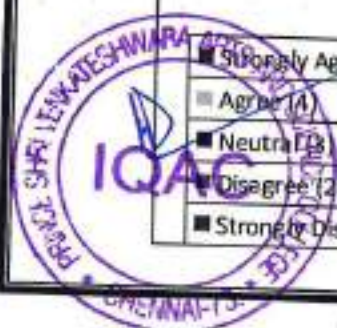
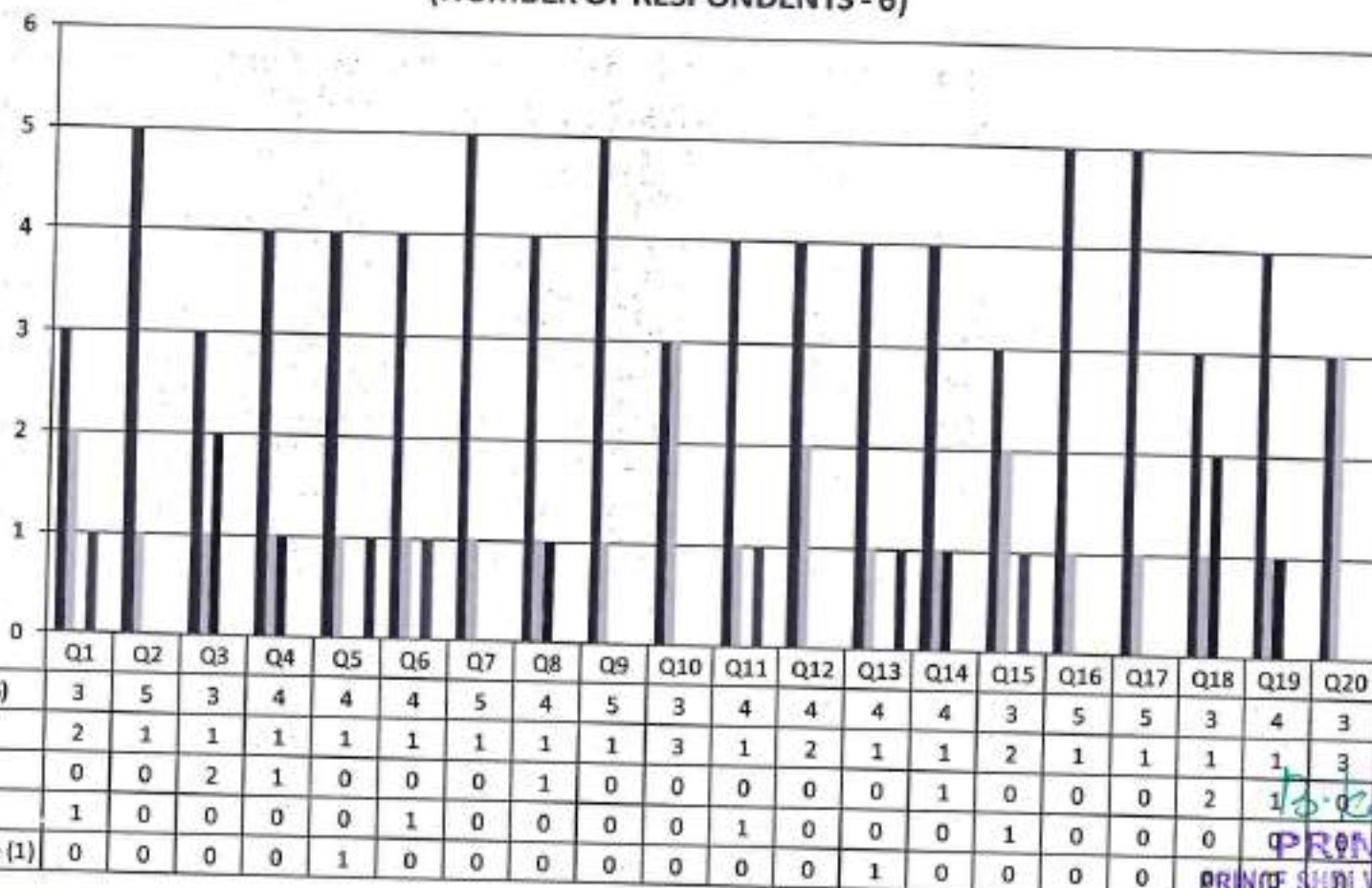
Gowrivaldam, Chennai-600073.

Affiliated to University of Madras, ISO 9001:2015 Certified Institution

EMPLOYER FEEDBACK ON CURRICULUM, INFRASTRUCTURE FACILITIES & AMBIENCE OF THE INSTITUTION - 2020-2021

M.Sc. BIOTECHNOLOGY

(NUMBER OF RESPONDENTS - 6)



S. Kalpana
PRINCIPAL
 PRINCE SHRI VENKATESHWARA
 ARTS AND SCIENCE COLLEGE